

VIEW500

USER-FRIENDLY STANDARD OTDR

- SOLA (Smart Optical Link Analyzer)
- 7" Touch Screen with Smart GUI
- 8GB Internal Storage with Internal SD Card & External USB Memory
- Built-In VFL, Light Source and OPM
- Fast Booting Time
- Ultra-High Capacity Battery




BELIEVE
YOUR
EYES

DESCRIPTION


The VIEW500 OTDR is used in the installation and maintenance of fiber optic cables. Features of the VIEW500 OTDR include high precision test capabilities, fast response times, and easy to learn operation. The multi-point capacitive touch screen allows for user-friendly operation. The VIEW500 offers accurate and fast test results and creates a report automatically. The VIEW500 is equipped with an industrial grade CPU for creating and storing test results.


CHARACTERISTICS



 Simplify the Test Process


 Measure Optical Power & Loss

 Measure Fiber Optical Link

 Identify Fiber Fault Location

 Magnify the Fiber End Face

 7" Touch Screen with Smart GUI
High Brightness
Resolution of 800x480

 Fast Booting Time

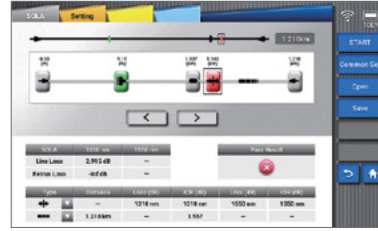
touch

OTDR



OTDR mode allows for measuring distance, loss, reflectivity, attenuation and accumulation loss on a fiber optic link.

SOLA



SOLA is an application for the OTDR, designed to simplify OTDR test process without the need to configure the parameters or analysis while parsing multiple complex OTDR curves.

VFL



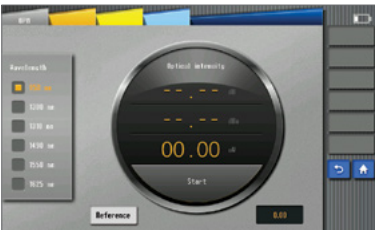
VFL allows for finding direct fault locations in fiber test dead zones or performing fiber core calibration in multi-fiber cables.

FIBER MICROSCOPE



Fiber end tester (peripheral required) is mainly used to test the cleanliness and flatness of the fiber end face.

OPM



OPM is used for measuring the absolute optical power meter or relative optical power loss through the span of the optical fiber.

LIGHT SOURCE



Invisible light source (1310/1550nm) can provide the following sources of light: CW, 1kHz, 2kHz modulated and 1kHz & 2kHz blink.

ULTRA-HIGH CAPACITY BATTERY



VIEW500 offers the ultra-high battery capacity of 7800mAh.

TECHNICAL SPECIFICATIONS

Model	VIEW500
Display	7 inches, High Brightness TFT LCD, resolution of 800×480
Distance unit	m / km / mile / ft
Dynamic range	35dB / 33dB (1310nm / 1550nm)
Range settings (km)	1.3, 2.5, 5, 10, 20, 40, 80, 120, 160, 360km
Range settings (mile)	0.81, 1.55, 3.11, 6.22, 12.4, 24.8, 49.6, 74.6, 99.4, 223.7mile
Pulse width	5ns, 10ns, 20ns, 50ns, 100ns, 200ns, 500ns, 1μs, 2μs, 10μs, 20μs
Dead zone (Event/Attn./PON)	0.8m / 4m / 40m
Distance accuracy	±(1m+Distance×2.5×10 ⁻⁵ +Sampling resolution)
Linearity	0.03dB
Sampling points	160,000 points
Refractive index	1.000000 - 2.000000 (step: 0.000001)
Splitting ratio	Up to 1:64 splitter
Resolution	0.04m ~ 10.24m
Loss readout resolution	0.001dB
Battery capacity	Operating Time : Up to 12hours
File format	SOR, BMP, JPG, GDM, SOLA, PDF
External connection	USB 2.0
Compatible connector	APC(FC, SC, LC), UPC(FC, SC, LC, ST)
Power supply	AC Input 100-240V, 50-60Hz / DC Input 19V, 3.42A
VFL port	2.5mm ferrule type
VFL wavelength	650nm ±10nm
VFL distance	Up to 10km
VFL output power	20mW
Light source	Operating wavelength: 1310nm / 1550 nm ±10nm
Light source output power	-5dBm
OPM port	SC, FC, ST
Wavelength calibration[OPM]	850 / 1300 / 1310 / 1490 / 1550 / 1625 / 1650nm
Power range (OPM)	-70 to +6dBm (Accuracy: 0.01dB)

PACKAGE

OTDR	VIEW500
Power cable / AC Adapter	ACC-25 / JS-180300
Carrying case	Soft case
Shoulder strap / Touch pen	✓
Calibration certificate	✓

GENERAL SPECIFICATIONS

Dimension	7.08H x 10.70W x 2.44D inches (180H x 272W x 62D mm, excluding rubber bumper)
Weight	4.19pounds (1.90kg with battery)
Operating conditions	-10~50℃
Storage conditions	-20~60℃
Relative humidity	0~95% (Noncondensing)



* The information on this catalog is subject to change without prior notice.

ORDERING INFORMATION

XXX - XXX - XXX - XXX - XXX - XXX - XXX - XXX - XXX

Model

OTDR: VIEW500

Optical Configuration

SMF1: 1310/1550nm

Basic Software

OTDR: OTDR application only

OS: OTDR & SOLA application

Fiber Connector

CNT1: FC/APC CNT4: FC/UPC CNT7: ST/UPC

CNT2: SC/APC CNT5: SC/UPC

CNT3: LC/APC CNT6: LC/UPC

Power Meter

P0: without Power Meter

PM: with Power Meter

Power Meter Connector Adapter ^{a)}

PMC1: FC(UPC and APC)

PMC2: SC(UPC and APC)

PMC3: ST/UPC

Light Source

LS0: without VFL & Light Source

LS1: with VFL

LS2: with Light Source

LS3: with VFL & Light Source

Micro Scope

MS0: without Micro Scope

MS1: with Micro Scope - V20

Hard Case

HC0: without Hard Case

HC1: with Hard Case

Example: VIEW500-SMF1-OS-CNT2-PM-PMC1-LS3-MS1-HC0

^{a)} If Power Meter selected.

APC CONNECTOR



To improve the testing efficiency and optimize the OTDR function, APC connector is recommended to be applied and connected with SM port of VIEW500, due to low reflectance caused by it. The reflection coefficient is the key parameter that will affect the OTDR performance and especially the dead zone. (The performance of the APC connector is better than that of the UPC connector).