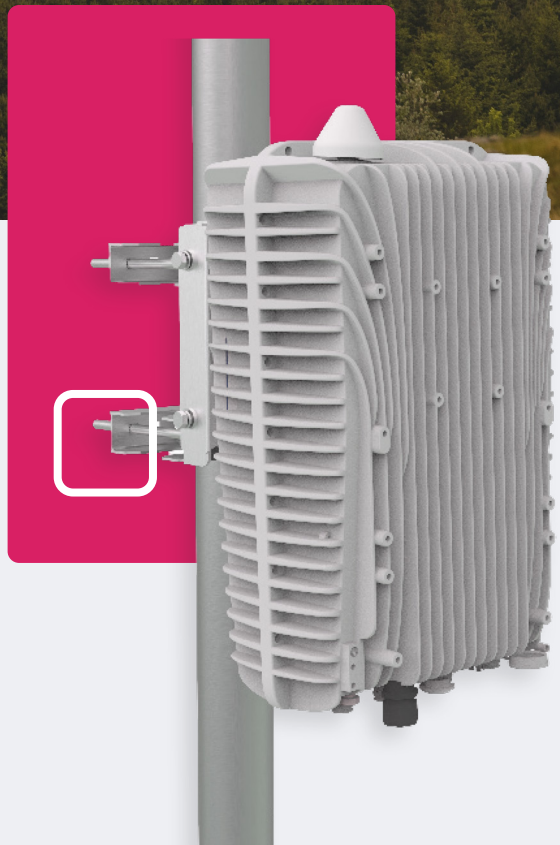


WIRELESS SOLUTIONS FOR  
**ANYONE, ANYWHERE.**



FW-600

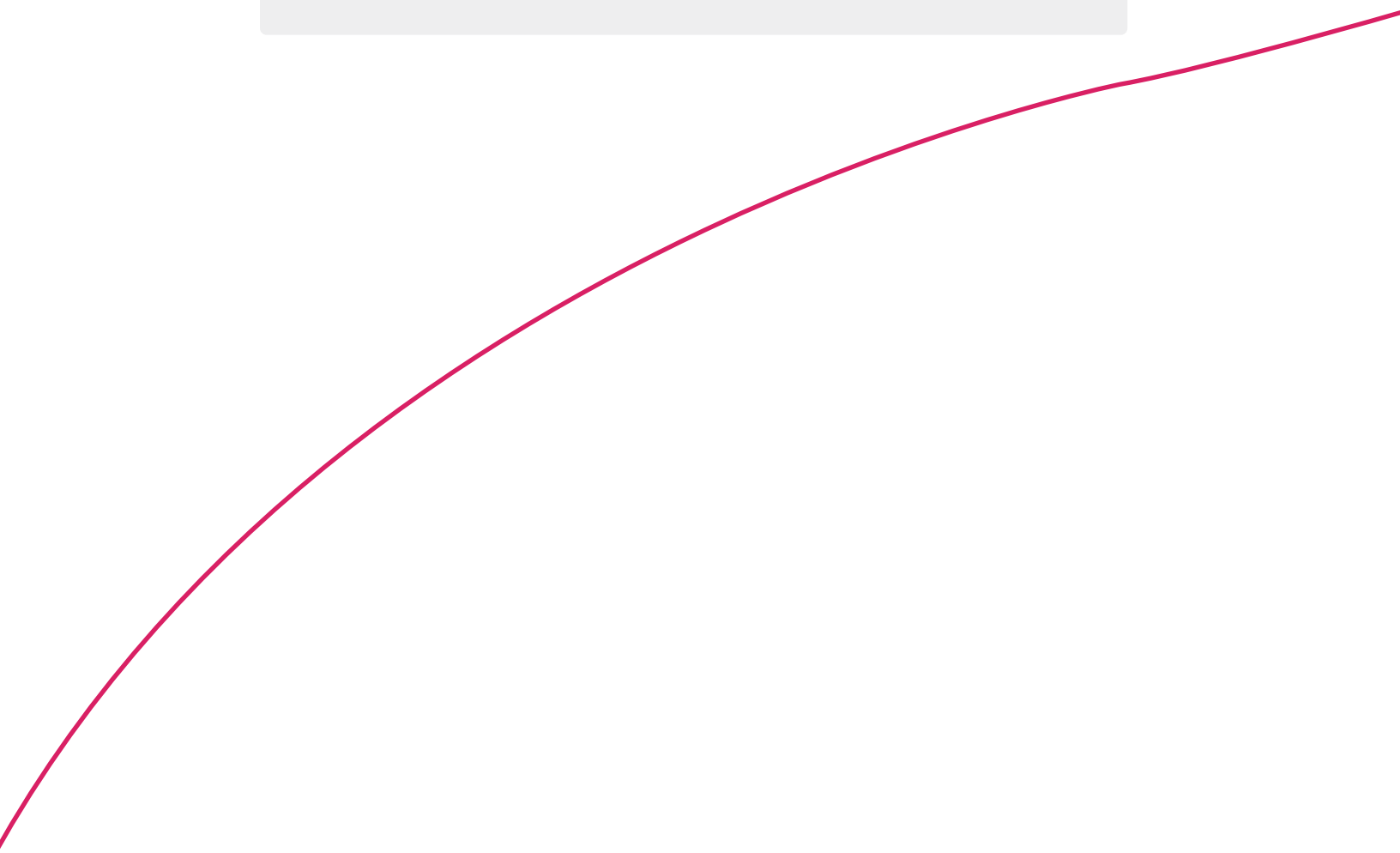
B 4 1



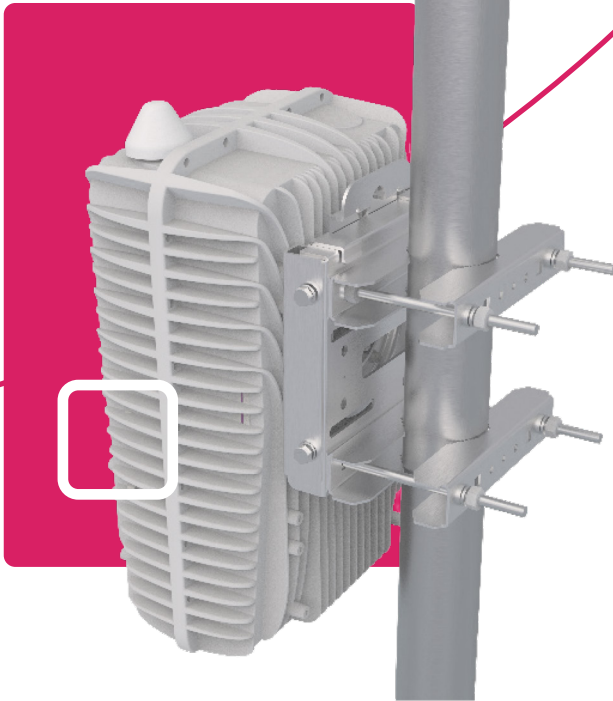
# YOUR NETWORK. OUR SOLUTIONS.

## About BLiNQ Networks

BLiNQ Networks is a pioneer manufacturer of CBRS-certified fixed access and mobile broadband wireless equipment, providing industry-leading price & performance in LTE and 5G-ready solutions.



# FW-600



## **A POWERFUL NETWORK SOLUTION THAT PUSHES BOUNDARIES**

The FW-600 is an ultra-high capacity, all integrated multicarrier LTE base station system designed as a response to today's broadband connectivity needs in rural and dense suburban markets.

This powerful base station comes in either a single or dual band architecture and can easily match or out-perform most mMIMO commercial solutions. Paired with passive beamforming antenna systems, the FW-600 brings spectral efficiency and capacity to new horizons.

# FW-600 B41 SINGLE BAND ARCHITECTURE

## SUMMARY



## THE FW-600 B41 SINGLE BAND ARCHITECTURE FEATURES:

- 3 Beams x 1CC (per each beam)
- Peak:
  - 510 Mbps/Sector – 3 Beam Antenna
  - 1020 Mbps/Sector – 6 Beam Antenna
- 4 Sectors Architecture

The FW-600 product can also pair B41 and B46 by a different sku. Contact our sales team for more information.

### NOTE

- Carrier aggregation is contiguous and non-contiguous covering entire band without IBW window restrictions.



# FW-600

## SPECIFICATIONS BASIC MULTI ENB BBU/RRH UNIT



MODEL SERIES	
<b>BASE STATION</b>	FW-600 B41
RADIO SPECIFICATION	
<b>Frequency Band</b>	TDD LTE Bands 41
<b>EIRP</b>	62 dBm/1CC
<b>Channel Bandwidth</b>	10, 20 MHz (5 MHz, 15 MHz)
<b>MIMO</b>	6Tx x 6Rx (several possible MIMO configurations)
<b>LTE Compliance</b>	3GPP Release 10 (SW upgrade to Release 13)
MECHANICAL	
<b>Dimensions (LxWxD) Base Unit</b>	19.4" x 12" x 8.4" (492 mm x 304 mm x 160 mm)
<b>Survival Wind Speed</b>	>125 mph (FW-600: >200 kph)
<b>Weight</b>	25.0 Kg
<b>Bracket Weight</b>	33.1 lbs (15 kg) – Supports up to 3 x FW-600 units
<b>Operational Temperature</b>	-40 °F to 140 °F (-40 °C to 60 °C)
PERFORMANCE & ATTRIBUTES	
<b>Connected/Active UEs</b>	Up to 576 active users per Base Unit (can be SW upgraded)
<b>Throughput DL TDD Config 2-7</b>	3 x 140 Mbps per sector (3 Beam Antenna) 6 x 140 Mbps per sector (6 Beam Antenna)
<b>Throughput UL TDD Config 2-7</b>	3 x 32 Mbps per sector (3 Beam Antenna) 6 x 32 Mbps per sector (6 Beam Antenna)
<b>Operating Mode</b>	TD-LTE supports all standard frame configurations
<b>Power Consumption</b>	480 W
<b>Power</b>	48V DC
<b>Connectivity</b>	1 x Copper 1000BaseT 1 x SFP 1 x PPS TNC Connector 6 x 2.2-5 RF Connectors
<b>Synchronization</b>	Integral GPS receiver (GPS GLONASS BeiDou), 1588v2
<b>Embedded EPC</b>	Software Option
OA&M	
<b>Configuration</b>	WebUI / CLI, Radio and Ethernet performance monitoring
<b>EMS Integration</b>	SNMP v2c/v3
<b>OAM Protocols</b>	Netconf, HTTP(S), TCP/IP, UDP, (S)FTP, SSH, TR-069/TR-196

\* 6 ports antenna

# FW-600

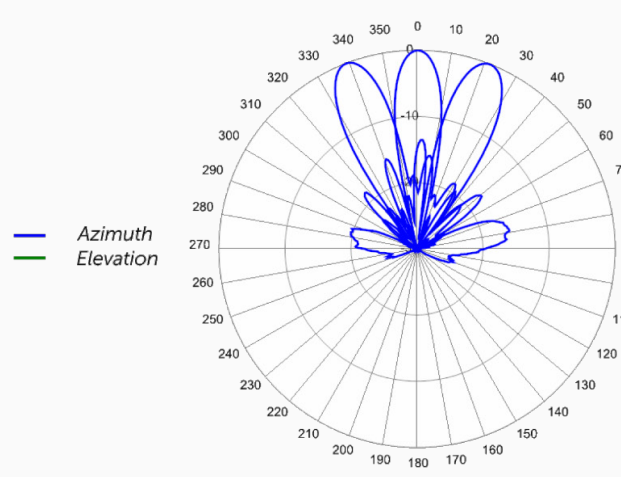
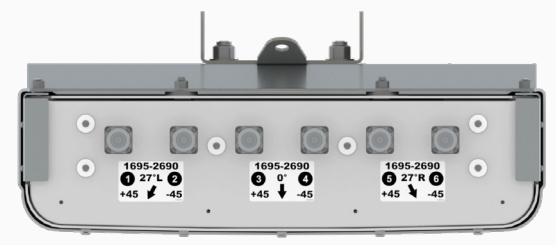
PROPOSED DEPLOYMENT CONFIGURATIONS



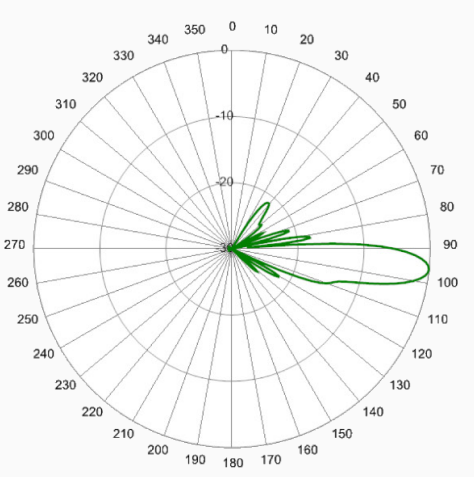
## MBA3F-E3A:

### 3 BEAM SPECIAL EVENTS ANTENNA

- Three foot (0.8 m) tall, single band, six port multibeam array. Containing Three Independent LTE Optimized Beams covering 1695-2690 MHz frequencies.
- LTE Optimized Beams for improved LTE data throughput by minimizing beam crossover, providing for an efficient use of valuable radio capacity and frequency spectrum.



2650 MHz Azimuths



2650 MHz Elevation 6°

# FW-600 B41

## ANTENNA SPECIFICATIONS



ELECTRICAL		
	<b>Ports</b>	6 x High Band ports for 1695-2690 MHz
	<b>Frequency Range</b>	2496-2690 MHz
	<b>Gain</b>	21.5 dBi
	<b>Azimuth Beamwidth (-3dB)</b>	12.8°
	<b>Azimuth Beam cross-over</b>	11.0 dB
	<b>Elevation Beamwidth (-3dB)</b>	9.7°
	<b>Electrical Downtilt</b>	5°
	<b>Elevation Sidelobes (1st Upper)(Typ.)</b>	< -16 dB
	<b>Cross-Polar discrimination (at Peak)</b>	> 35 dB
	<b>Front-to-Back Ratio @180° (Typ.)</b>	> 19 dB
	<b>Cross-Polar Port-to-Port Isolation</b>	> 24 dB
	<b>Interbeam Co-Pol Isolation</b>	> 15 dB
	<b>Interbeam Co-Pol Isolation (Non-Adjacent Beams) (Worse Case)</b>	> 12 dB
	<b>Voltage Standing Wave Ratio (VSWR)</b>	< 1.5:1
	<b>Passive Intermodulation (2x20W)</b>	≤ -153 dBc
	<b>Input Power Continuous Wave (CW)</b>	200 watts
	<b>Polarization</b>	Dual Pol 45°
	<b>Input Impedance</b>	50 ohms
	<b>Lightning Protection</b>	DC Ground
MECHANICAL		
	<b>Dimensions (LxWxD)</b>	30.5" x 24.9" x 6.6" (776 mm x 633 mm x 167 mm)
	<b>Survival Wind Speed</b>	> 150 mph (> 241 kph)
	<b>Front Wind load</b>	162 lbs (722 N) @ 100 mph (161 kph)
	<b>Side Wind Load</b>	46 lbs (206 N) @ 100 mph (161 kph)
	<b>Equivalent Flat Plate Area</b>	6.3 ft <sup>2</sup> (0.6 m <sup>2</sup> )
	<b>Weight*</b>	41.6 lbs (18.9 kg)
	<b>Connector</b>	6 x 7-16 DIN female long neck or 4.3-10 female
	<b>Mounting Pole</b>	2 to 5 in (5 to 12 cm)
*Weight excludes mounting		

# FW-600

## PROPOSED DEPLOYMENT CONFIGURATIONS

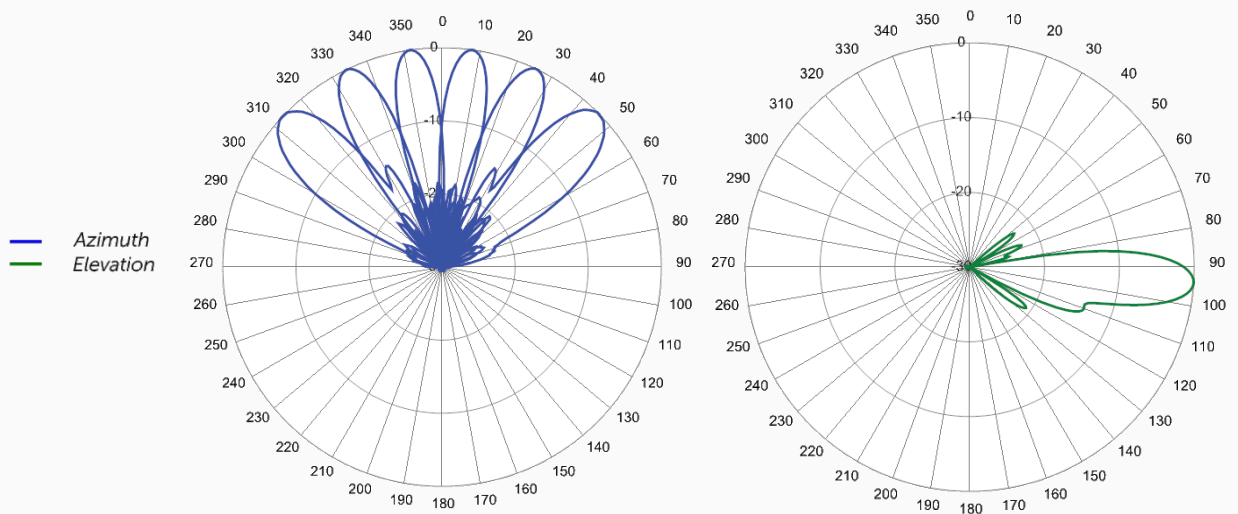


Here are some recommended antenna pairings and their deployment configurations.

# MBA6F-V2A:

## 6-BEAM SPECIAL EVENTS ANTENNA

- Two foot (0.6 m) tall, single band, twelve port multibeam array. Containing Six Independent LTE Optimized Beams covering 2300-2690 MHz frequencies
- LTE Optimized FBR, USLS and Co-Pol Beam Isolation Performance. Essential for today's LTE Data Driven Networks





# FW-600 B41

## ANTENNA SPECIFICATIONS



ELECTRICAL		
	<b>Ports</b>	12 × High Band Ports for 2300-2690 MHz
	<b>Frequency Range</b>	2496-2690 MHz
	<b>Gain</b>	21.9 dBi
	<b>Azimuth Beamwidth (-3dB)</b>	10.5°
	<b>Azimuth Beam cross-over</b>	10.7°
	<b>Elevation Beamwidth (-3dB)</b>	10.9°
	<b>Electrical Downtilt</b>	4°
	<b>Elevation Sidelobes (1st Upper)</b>	< -20 dB
	<b>Front-to-Back Ratio @180°</b>	> 35 dB
	<b>Cross-Polar Port-to-Port Isolation</b>	> 25 dB
	<b>Interbeam Co-Pol Isolation (Non-Adjacent Beams, Worst Case)</b>	> 10 dB
	<b>Voltage Standing Wave Ratio (VSWR)</b>	< 1.5:1
	<b>Passive Intermodulation (2x20W)</b>	≤ -153 dBc
	<b>Input Power Continuous Wave (CW)</b>	200 watts
	<b>Polarization</b>	Dual Pol 45°
	<b>Input Impedance</b>	50 ohms
	<b>Lightning Protection</b>	DC Ground
MECHANICAL		
	<b>Dimensions (LxWxD)</b>	24.6" × 31.3" × 6.5" (625 mm × 794 mm × 165 mm)
	<b>Survival Wind Speed</b>	> 150 mph (> 241 kph)
	<b>Front Wind load</b>	164 lbs (730 N) @ 100 mph (161 kph)
	<b>Side Wind Load</b>	36 lbs (159 N) @ 100 mph (161 kph)
	<b>Equivalent Flat Plate Area</b>	6.4 ft <sup>2</sup> (0.6 m <sup>2</sup> )
	<b>Weight*</b>	45.6 lbs (20.7 kg)
	<b>Connector</b>	12 × 7-16 DIN female long neck or 4.3-10 female
	<b>Mounting Pole</b>	2 to 5 in (5 to 12 cm)
* Weight excludes mounting		



---

**CONTACT US**

Tel: +1 416.214.4204  
info@blinqnetworks.com  
www.blinqnetworks.com

140 Renfrew Drive, Markham  
ON, L3R 6B3, Canada  
© 2018-2020 BLiNQ Networks a CCI company